



# COMMODITIES

**BRAZIL - ASWP**

**EXPORT REFERENCE PRICES**

January  
2025



**SCO**

Soft Corporate Offer

# SUGAR

**IC45 / IC150 / IC600-1200**

# IC 45

## Refined White Sugar

METRIC TONS	SBLC FULL	SBLC (value 6 shipments)	DLC FULL or SBLC (value 3 shipments)	SPOT (payment TT 50% SPA / 50% BL)
12.500	\$445.00	\$460.00	\$465.00	\$510.00
25.000	\$440.00	\$455.00	\$460.00	
50.000	\$435.00	\$450.00	\$455.00	
100.000	\$430.00	\$445.00	\$450.00	
200.000	\$425.00	\$440.00	\$445.00	
300.000 or more	\$420.00	\$435.00	\$440.00	
Commission for the Purchasing Group / Intermediaries	\$5.00/MT	\$3.00/MT	\$2.50/MT	\$2.50/MT

ICUMSA 45 IN CONTAINER (Quantities below 12,500MT)	FAS	FOB	CIF
	\$580.00	\$680.00	\$780.00
	\$5.00/MT commission for purchasing group and intermediaries		

**Origin:** Brazil

**Packaging:** Bulk in 50 kg. bags or 1,000 kg.

### Specifications

- Icumsa: 45 RBU
- Humidity: 0.04% Max.
- Ash content: 0.04% Max.
- Polarization: 99.80% Min.
- Solubility: 100% Free Flow
- Radiation: Normal Certificate
- Color: Sparkling White
- Granulation: Fine

# IC 150

Crystal Sugar

METRIC TONS	SBLC FULL	SBLC (value 6 shipments)	DLC FULL or SBLC (value 3 shipments)	SPOT (payment TT 50% SPA / 50% BL)
12.500	\$445.00	\$460.00	\$465.00	\$510.00
25.000	\$440.00	\$455.00	\$460.00	
50.000	\$435.00	\$450.00	\$455.00	
100.000	\$430.00	\$445.00	\$450.00	
200.000	\$425.00	\$440.00	\$445.00	
300.000 or more	\$420.00	\$435.00	\$440.00	
Commission for the Purchasing Group / Intermediaries	\$5.00/MT	\$3.00/MT	\$2.50/MT	\$2.50/MT

ICUMSA 150 IN CONTAINER (Quantities below 12,500MT)	FAS	FOB	CIF
		\$580.00	\$680.00
\$5.00/MT commission for purchasing group and intermediaries			

**Origin:** Brazil

**Packaging:** Bulk in 50 kg. bags or 1,000 kg.

## Specifications

- Icumsa: 150 RBU
- Humidity: 0.10% Max.
- Ash content: 0.10% Max.
- Polarization: 99.50% Min.
- Solubility: 100% Free Flow
- Radiation: Normal Certificate
- Color: Sparkling White
- Granulation: Fine

# IC 600-1200

Raw Brown Sugar (VHP)

METRIC TONS	SBLC FULL	SBLC (value 6 shipments)	DLC FULL or SBLC (value 3 shipments)	SPOT (payment TT 50% SPA/ 50% BL)
12.500				
25.000				
50.000				
100.000	\$470.00	\$480.00	\$490.00	\$510.00
200.000				
300.000				
or more				
Commission for the Purchasing Group / Intermediaries	\$5.00/MT	\$3.00/MT	\$2.50/MT	\$2.50/MT

ICUMSA 600-1200 IN CONTAINER (Quantities below 12,500MT)	FAS	FOB	CIF
	\$580.00	\$650.00	\$780.00
	\$5.00/MT Commission for Purchasing Group and Intermediaries		

**Origin:** Brazil

**Packaging:** Bulk in 50 kg. bags or 1,000 kg.

## Specifications

- Icumsa: 600-1200 RBU
- Humidity: 0.15% Max.
- Ash content: 0.15% Max.
- Polarization: 99.20% Min.
- Solubility: 95% Free Flow
- Radiation: Normal Certificate
- Color: Brown
- Granulation: Fine



**SCO**

Soft Corporate Offer

**SOYBEAN**

**GMO / NON-GMO**

# GMO

## Transgenic



METRIC TONS	SBLC FULL	DLC FULL or SBLC (value 3 shipments)	SPOT (payment TT 50% SPA / 50% BL)
<b>Any Quantity</b>	\$530.00	\$560.00	\$590.00
Commission for the Purchasing Group / Intermediaries	<b>\$5.00/MT</b>	<b>\$5.00/MT</b>	<b>\$2.50/MT</b>

# NON-GMO

## Non - Transgenic



METRIC TONS	SBLC FULL	DLC FULL or SBLC (value 3 shipments)	SPOT (payment TT 50% SPA / 50% BL)
<b>Any Quantity</b>	\$620.00	\$660.00	\$690.00
Commission for the Purchasing Group / Intermediaries	<b>\$5.00/MT</b>	<b>\$5.00/MT</b>	<b>\$2.50/MT</b>

**Origin:** Brazil

**Origin:** Brazil

**Packaging:** Bulk in 60 kg.

**Packaging:** Bulk in 60 kg.

### Specifications

### Specifications

- Grade: #2 GMO
- Type: suitable for human consumption
- Quality: standard export quality
- Test Weight: 54 pounds per bushel min
- Minimum Protein: 34%
- Moisture Content: max. 13.5%
- Foreign Material: max. 2.00%
- Oil Content: min. 18.5%
- Total Damage: 4% kernels: 3% max.
- Free Fatty Acids: 1% max.
- Discolored Seeds: 2% maximum

- Grade: #2 NON-GMO
- Type: suitable for human consumption
- Humidity: 13.5% maximum
- Max Splits: 20%
- Protein: 35% base, 34% minimum
- Max Color: 2%
- Oil Content: 18.5% base, 18.0% min.
- Test Weight: 54 pounds/ minute/ bushel
- Totally Damaged Grains: 3% max.
- Foreign Matter: 2% maximum
- Radiation: normal
- Heat Damaged Grains: 0.50% max.

**SCO**

Soft Corporate Offer

**CORN**

**GMO/ NON-GMO**





# GMO

Transgenic



METRIC TONS	SBLC FULL	DLC FULL or SBLC (value 3 shipments)	SPOT (payment TT 50% SPA / 50% BL)
<b>Any Quantity</b>	\$345.00	\$370.00	\$390.00
Commission for the Purchasing Group / Intermediaries	\$5.00/MT	\$5.00/MT	\$2.50/MT

# NON-GMO

Non - Transgenic



METRIC TONS	SBLC FULL	DLC FULL or SBLC (value 3 shipments)	SPOT (payment TT 50% SPA / 50% BL)
<b>Any Quantity</b>	\$360.00	\$380.00	\$390.00
Commission for the Purchasing Group / Intermediaries	\$5.00/MT	\$5.00/MT	\$2.50/MT

**Origin:** Brazil  
**Packaging:** Bulk in 60 kg.

**Origin:** Brazil  
**Packaging:** Bulk in 60 kg.

## Specifications

- Grade: #2 GMO
- Test weight: min. 70
- Humidity: max. 14%
- Important Matters: max. 1.5%.
- Broken Core: max. 3%
- Total Damage: max. 3%
- Aflatoxin: max. 20 ppb
- Protein: min. 8%
- Fat: min. 3%
- Fiber: max. 2.7%
- Total Ash: max. 1.5%
- T.V.N.: max. 50
- Toxic Grains: max. 2 – 3 (seeds out of 100)
- E. COLI: max. 0
- Mold: max. 5 x 10<sup>5</sup>
- Salmonella: max. 0

## Specifications

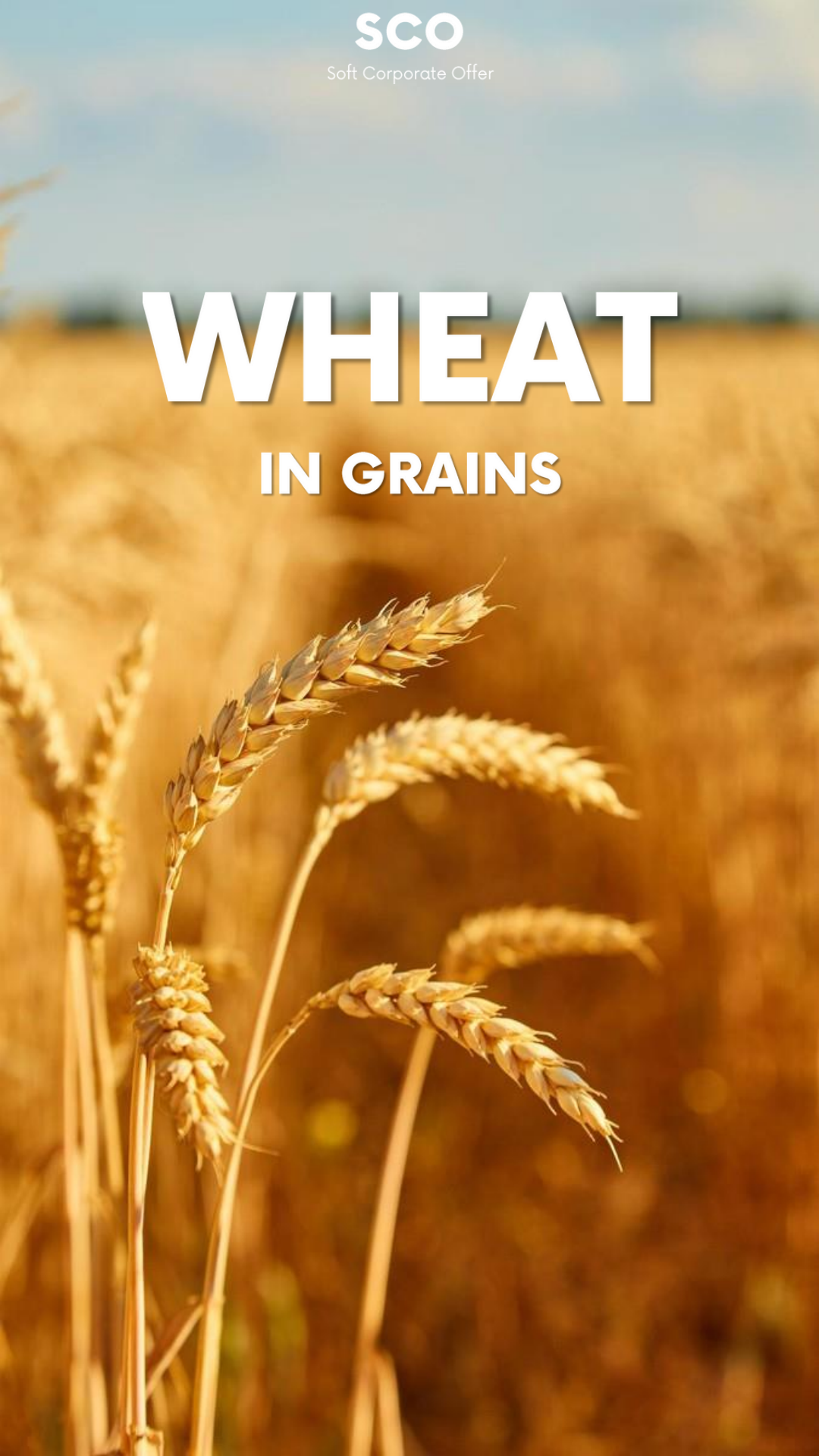
- Grade: #2 NON-GMO
- Humidity: 14.5% max.
- Foreign matter: 3% max.
- Broken kernels: 4% max
- Aflatoxin does not exceed: 20 PPM
- max.
- Protein: 8% Min.
- Fat: 3.5%
- Fiber: 2.7% max.
- Bulk density: 60-70 Hl. Min.
- Weevil Damage Kernel: 3% Max
- Chemico Seed: 2 seeds in 100gr.
- max.
- Gray: 1.5% max.
- TVN: 50 mg/100 max.
- Toxic grains: 2-3/100g max.

SCO

Soft Corporate Offer

# WHEAT

## IN GRAINS



# WHEAT GRAINS

METRIC TONS	SBLC FULL	DLC FULL or SBLC (value 3 shipments)	SPOT (payment TT 50% SPA / 50% BL)
<b>Any Quantity</b>	\$530.00	\$560.00	\$610.00
Commission for the Purchasing Group / Intermediaries	\$5.00/MT	\$5.00/MT	\$5.00/MT

## WHEAT GRAINS

**Origin:** Brazil

**Packaging:** Bulk in 50 kg.

### Specifications

- Moisture: 14% max.
- Protein content: 11,5% min. (N x 5.7 in dry matter)
- Hagberg falling number: 220 min.
- Zeleny index: 25 min.
- Specific weight: 74kg/hl min.
- Aflatoxin total: 4 microgram/kg max.
- Ochratoxin: 5 microgram/kg max.
- Deoxynivalenol (Vomitoxin): 1250 microgram/kg max.
- Presence of Datura seeds and other toxic seeds or traces of tropane alkaloids: Nil
- Matter which is not basic cereal of unimpaired quality: 10%
- Broken grains: Max. 3% grain pieces or grains passing through a sieve with a circular mesh 2.5 mm in diameter
- Grain impurities: Max. 5% (shriveled grains, grains of other cereals, grains damaged by pests, grains in which the germ is discolored, and grains overheated during drying)
- Sprouted grains: 2.5% max.
- Miscellaneous impurities: Max. 1% (weed seeds, damaged grains, extraneous matter, husks, decayed grains, dead insects and insect fragments)
- Ergot: 0.05% max.
- Toxic or harmful grains: 0.1% max.

SCO


Self-Corporate Offer

# FLOUR & MEAL

CORN / SOY / WHEAT




# CORN




TYPE	METRIC TONS	SBLC FULL	DLC FULL or SBLC (value 3 shipments)	SPOT (payment TT 50% SPA / 50% BL)
<b>FLOUR</b>	<b>Any</b>	\$650.00	\$680.00	\$710.00
<b>MEAL</b>	<b>Quantity</b>	\$450.00	\$480.00	\$510.00

# SOY



TYPE	METRIC TONS	SBLC FULL	DLC FULL or SBLC (value 3 shipments)	SPOT (payment TT 50% SPA / 50% BL)

# WHEAT



TYPE	METRIC TONS	SBLC FULL	DLC FULL or SBLC (value 3 shipments)	SPOT (payment TT 50% SPA / 50% BL)
<b>FLOUR</b>	<b>Any</b>	\$910.00	\$950.00	\$990.00
<b>MEAL</b>	<b>Quantity</b>	\$710.00	\$750.00	\$790.00

**SCO**

Soft Corporate Offer

**COFFEE**

**ARABICA / ROBUSTA**



# ARABICA

Roasted

METRIC TONS	SBLC FULL	DLC FULL or SBLC (value 3 shipments)	SPOT (payment TT 50% SPA / 50% BL)
<b>Any Quantity</b>	\$5,375.00	\$5,420.00	\$5,690.00
Commission for the Purchasing Group / Intermediaries	<b>\$5.00/MT</b>	<b>\$5.00/MT</b>	<b>\$5.00/MT</b>

# ROBUSTA

Canephora



METRIC TONS	SBLC FULL	DLC FULL or SBLC (value 3 shipments)	SPOT (payment TT 50% SPA / 50% BL)
<b>Any Quantity</b>	\$5,245.00	\$5,350.00	\$5,670.00
Commission for the Purchasing Group / Intermediaries	<b>\$5.00/MT</b>	<b>\$5.00/MT</b>	<b>\$5.00/MT</b>

## ARABICA

**Origin:** Brazil

**Packaging:** Bulk in 60 kg.

### Specifications

- Caffeine: 0.8-1.4%
- Type: 6
- Sugar Content: 6-9%
- Essential oil content: 15-17%
- Humidity: 13% Max.
- Mixture: 1% Max.
- Broken grains: 5% Max.
- Black grains: 5% Max.
- Screen 13: 90% Min.

## ROBUSTA

**Origin:** Brazil

**Packaging:** Bulk in 60 kg.

### Specifications

- Caffeine: 1.7-4%
- Type: 8
- Sugar Content: 3-7%
- Essential oil content: 10-12%
- Humidity: 13% Max.
- Mixture: 0.5% Max.
- Broken grains: 5% Max.
- Black grains: 5% Max.
- Screen 13: 90% Min.

SCO

Soft Corporate Offer

# SORGHUM

RED





# SORGHUM RED

METRIC TONS	SBLC FULL	DLC FULL or SBLC (value 3 shipments)	SPOT (payment TT 50% SPA / 50% BL)
<b>Any Quantity</b>	\$450.00	\$480.00	\$530.00
Commission for the Purchasing Group / Intermediaries	<b>\$5.00/MT</b>	<b>\$5.00/MT</b>	<b>\$5.00/MT</b>

## SORGHUM RED

**Origin:** Brazil

**Packaging:** Bulk in 50 kg.

### Specifications

- Moisture: 14% Max.
- Purity: 99% Min.
- Insects: No insects dead or alive, vermin or excrement
- Appearance: White, Red
- Usage: Human consumption, Animal Feed & bird feed
- Crop: New crop



SCO

Soft Corporate Offer

**RICE**

**WHITE / PARBOLIZED**

# WHITE

5% Broken



METRIC TONS	SBLC FULL	DLC FULL or SBLC (value 3 shipments)	SPOT (payment TT 50% SPA / 50% BL)
<b>Any Quantity</b>	\$720.00	\$750.00	\$790.00
Commission for the Purchasing Group / Intermediaries	\$5.00/MT	\$5.00/MT	\$5.00/MT

# PARBOLIZED

Type 1



METRIC TONS	SBLC FULL	DLC FULL or SBLC (value 3 shipments)	SPOT (payment TT 50% SPA / 50% BL)
<b>Any Quantity</b>	\$850.00	\$880.00	\$910.00
Commission for the Purchasing Group / Intermediaries	\$5.00/MT	\$5.00/MT	\$5.00/MT

## WHITE 5% BROKEN

**Origin:** Brazil  
**Packaging:** Bulk in 50 kg.

### Specifications

- Type: 1
- 5% Broken Long Grain White Rice
- Breakage (% max): 5%
- Average humidity (% max): 14.5%
- Foreign substances (% max): 0.3%
- Damaged grains (% max): 1.0%
- Yellow grains (% max): 0.5%
- Calcareous grains (% max): 6%
- Grains with red stripes (% max): 2%
- Glutinous grains (% max): 1.5%
- Immature grains (% max): 0.2%
- Average whole grain length (min): 5.8-6.5 mm
- Rice with husk (max/1 kg): 8 grains
- Harvest year: Current
- Grinding degree: fine ground and double polished

## PARBOLIZED TYPE 1

**Origin:** Brazil  
**Packaging:** Bulk in 50 kg.

### Specifications

- Type: 1
- Breakage (% max): 5%
- Foreign substances (% max): 0.1%
- Damaged grains (% max): 0.5%
- Whole grains (% min): 85%
- Shelled grains (max/ 1 kg): 1 grain
- Average humidity (% max): 14.5%
- Average whole grain length (min/mm): 6.2mm
- Termites and Insects: None
- Harvest year: Current
- Grinding degree: Finely ground and double polished



**SCO**

Soft Corporate Offer

**BEAN**

**BROWN / BLACK / WHITE**

# BROWN

Carioca



METRIC TONS	SBLC FULL	DLC FULL or SBLC (value 3 shipments)	SPOT (payment TT 50% SPA / 50% BL)
<b>Any Quantity</b>	\$2,210.00	\$2,250.00	\$2,290.00
Commission for the Purchasing Group / Intermediaries	\$5.00/MT	\$5.00/MT	\$5.00/MT

# BLACK

Phaseolus Vulgaris L.



METRIC TONS	SBLC FULL	DLC FULL or SBLC (value 3 shipments)	SPOT (payment TT 50% SPA / 50% BL)
<b>Any Quantity</b>	\$1,980.00	\$2,010.00	\$2,050.00
Commission for the Purchasing Group / Intermediaries	\$5.00/MT	\$5.00/MT	\$5.00/MT

# WHITE

Cannellini



METRIC TONS	SBLC FULL	DLC FULL or SBLC (value 3 shipments)	SPOT (payment TT 50% SPA / 50% BL)
<b>Any Quantity</b>	\$2,010.00	\$2,150.00	\$2,190.00
Commission for the Purchasing Group / Intermediaries	\$5.00/MT	\$5.00/MT	\$5.00/MT

**SCO**

Soft Corporate Offer

**OIL**

**CORN / CANOLA /  
SOYBEAN / SUNFLOWER**



# CORN

## Degummed Oil Flex Tank

METRIC TONS	SBLC FULL	DLC FULL or SBLC (value 3 shipments)	SPOT (payment TT 50% SPA / 50% BL)
<b>Any Quantity</b>	TBA ACCORDING TO QUANTITY OR PACKAGING		
Commission for the Purchasing Group / Intermediaries	\$5.00/MT	\$5.00/MT	\$5.00/MT

# CANOLA

## Degummed Oil Flex Tank

METRIC TONS	SBLC FULL	DLC FULL or SBLC (value 3 shipments)	SPOT (payment TT 50% SPA / 50% BL)
<b>Any Quantity</b>	TBA ACCORDING TO QUANTITY OR PACKAGING		
Commission for the Purchasing Group / Intermediaries	\$5.00/MT	\$5.00/MT	\$5.00/MT

### CORN DEGUMMED OIL

**Origin:** Brazil

**Packaging:**

- 200-liter metal drums = 180 kg
- 54-liter plastic drums = 48 kg
- 18-liter metal cans = 16 kg

**Specifications**

- Maximum moisture content of 12.5%
- Minimum protein content of 46.0%
- Maximum residual fat content of 2.5%
- Maximum fiber content of 6.0%
- Ash content maximum 6.0%
- Acidity index ≤ 0.20
- Peroxide value ≤ 2.5

### CANOLA DEGUMMED OIL

**Origin:** Brazil

**Packaging:**

- 200-liter metal drums = 180 kg
- 54-liter plastic drums = 48 kg
- 18-liter metal cans = 16 kg

**Specifications**

- Maximum moisture content of 12.5%
- Minimum protein content of 46.0%
- Maximum residual fat content of 2.5%
- Maximum fiber content of 6.0%
- Maximum ash content of 6.0%
- Specific weight (20°C) between 0.914 and 0.920 g/cm<sup>3</sup>
- Iodine between 110 and 126 g I<sub>2</sub>/100g
- Saponification between 182 and 193 mg KOH/g
- Unsaponifiable matter less than or equal to 2.0%

# SOYBEAN

Degummed Oil Flex Tank

METRIC TONS	SBLC FULL	DLC FULL or SBLC (value 3 shipments)	SPOT (payment TT 50% SPA / 50% BL)
<b>Any Quantity</b>	TBA ACCORDING TO QUANTITY OR PACKAGING		
Commission for the Purchasing Group / Intermediaries	\$5.00/MT	\$5.00/MT	\$5.00/MT

# SUNFLOWER

Degummed Oil Flex Tank

METRIC TONS	SBLC FULL	DLC FULL or SBLC (value 3 shipments)	SPOT (payment TT 50% SPA / 50% BL)
<b>Any Quantity</b>	TBA ACCORDING TO QUANTITY OR PACKAGING		
Commission for the Purchasing Group / Intermediaries	\$5.00/MT	\$5.00/MT	\$5.00/MT

## SOYBEAN DEGUMMED OIL

**Origin:** Brazil

### Packaging:

- 200-liter metal drums = 180 kg
- 54-liter plastic drums = 48 kg
- 18-liter metal cans = 16 kg

### Specifications

- Moisture (Maximum): 2.0 g/kg
- Ethereal Extract (Minimum): 960.0 g/Kg
- Unsaponifiable Matter (Maximum): 15.0 g/kg
- Oleic Acidity (Maximum): 1.5 mg KOH/g
- Peroxide Index (Maximum): 15 meq O<sub>2</sub>/1000g

## SUNFLOWER DEGUMMED OIL

**Origin:** Brazil

### Packaging:

- 200-liter metal drums = 180 kg
- 54-liter plastic drums = 48 kg
- 18-liter metal cans = 16 kg

### Specifications

- Relative density at 20°C:  $\geq 0.914 \leq 0.916$
- Refractive index at 40°C:  $\geq 1.461 \leq 1.471$
- Saponification index:  $\geq 190 \leq 191$  mg KOH/g
- glodine index:  $\geq 94 \leq 122$  Wijs



**SCO**

Soft Corporate Offer

# MEATS

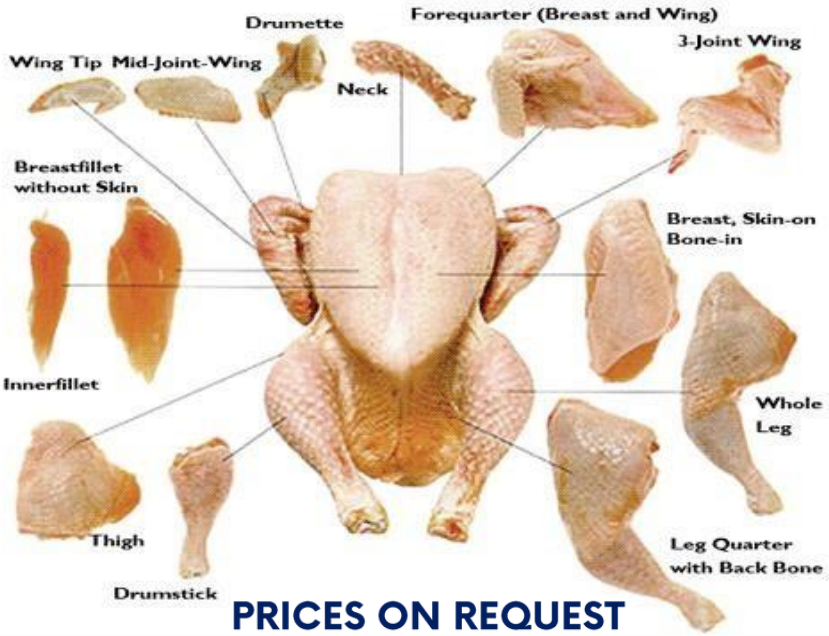
**CHICKEN / BEEF / PORK /  
LAMB**



**AVA  
LATAM  
GROUP**

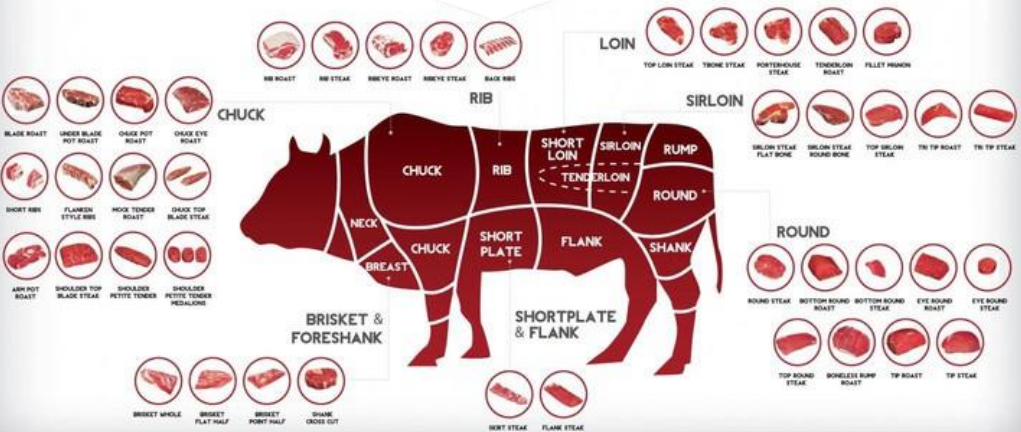
# CHICKEN

Frozen Cuts



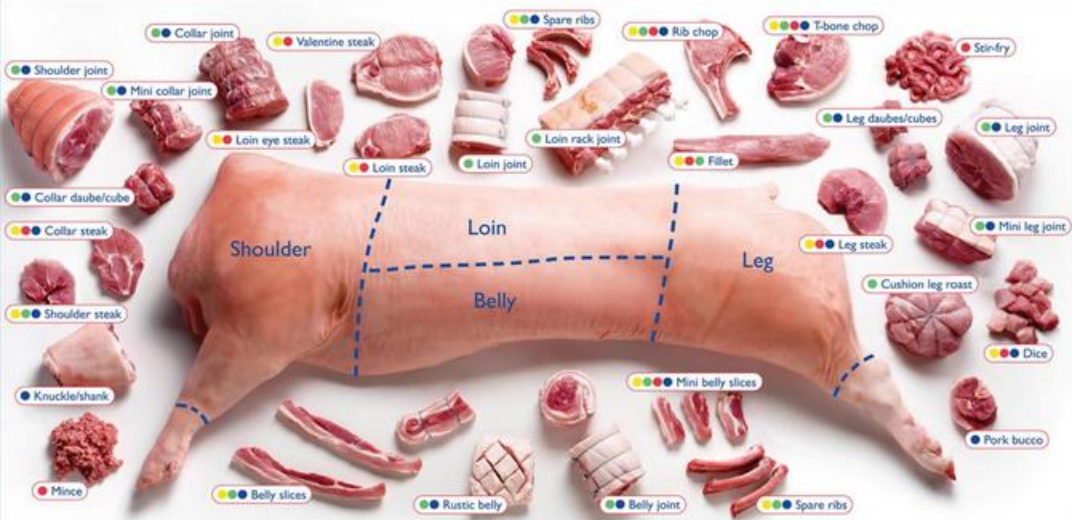
# BEEF

Frozen Cuts



# PORK

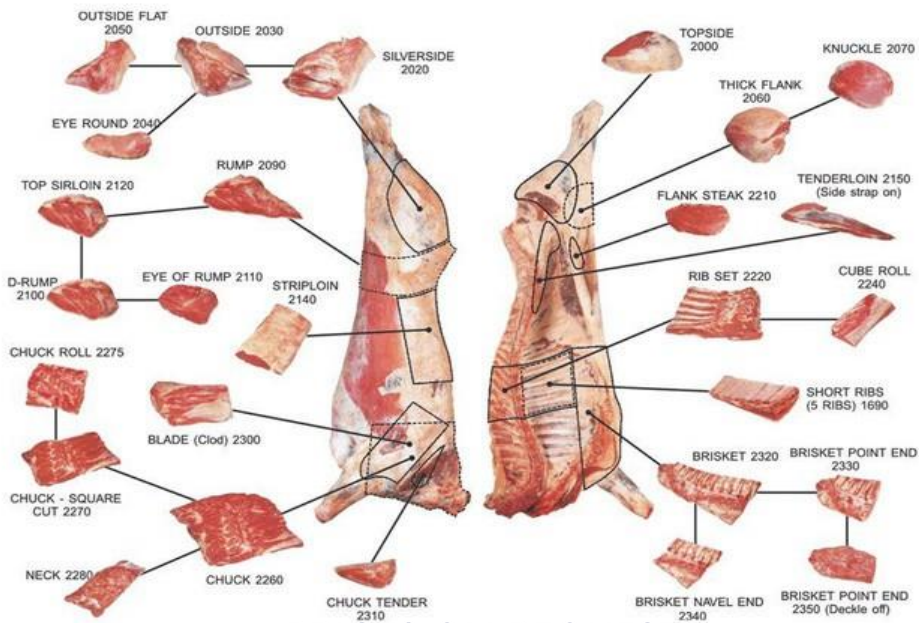
Frozen Cuts



**PRICES ON REQUEST**

# LAMB

Frozen Cuts



**PRICES ON REQUEST**

**SCO**

Soft Corporate Offer

# LIVE CATTLE

ANGUS / NELORE





# ANGUS

QUANTITY	SBLC FULL	SBLC (value 3 shipments)
<b>Minimum 5,000 heads</b>	PRICES ON REQUEST	
Commission for the Purchasing Group / Intermediaries	<b>\$50.00/MT</b>	

**ANGUS** beef is known for its quality, with a high degree of marbling, which makes it softer and tastier. In 2022, Brazil exported 1,88 thousand tons of Angus beef, the highest volume ever recorded. In 2023, the total volume exported reached 2,800 tons, an increase of 68% on the previous year.



# NELORE

QUANTITY	SBLC FULL	SBLC (value 3 shipments)
<b>Minimum 5,000 heads</b>	PRICES ON REQUEST	
Commission for the Purchasing Group / Intermediaries	<b>\$50.00/MT</b>	

**NELORE** is the most predominant breed in Brazil, representing around 80% of the national herd. The Nelore originated in India and is well adapted to Brazilian climatic conditions, especially in warmer regions.

# DAIRY COW



QUANTITY	SBLC FULL	SBLC (value 3 shipments)
<b>Minimum 5,000 heads</b>	PRICES ON REQUEST	
Commission for the Purchasing Group / Intermediaries	<b>\$50.00/MT</b>	

The market for **DAIRY COWS** plays a key role in the dairy industry, providing the main ingredient for the production of milk and dairy products. The most common cows to invest in dairy cattle here in Brazil are:

1. Holstein
2. Girolando
3. Brown Swiss
4. Jersey
5. Zebu

Dairy The three most common zebu breeds are: Guzerá, Sindi, Gir.

# LAMB



QUANTITY	SBLC FULL	SBLC (value 3 shipments)
<b>Minimum 5,000 heads</b>	PRICES ON REQUEST	
Commission for the Purchasing Group / Intermediaries	<b>\$50.00/MT</b>	

**LAMB** meat is considered noble and has a high value on the market due to the scarcity of standardized cuts. To guarantee the quality of the meat, producers must buy good dams and breeding stock and standardize the quality from the start. Lambs can be marketed in groups of producers, which allows them to create strategies to increase the value of the final product.

## PAYMENT TERMS TERMOS DE PAGAMENTO

**SBLC  
or LC** MT799 / MT760 – Irrevocable, Transferable,  
Divisible, Confirmed by a Top bank 50, and valid  
for 366 days.

MT799 / MT760 - Irrevogável, Transferível, Divisível,  
Confirmado por um banco Top 50, e válido por 366 dias.

**DLC** MT700 / MT705 – Irrevocable, Transferable,  
Divisible, Confirmed by a Top bank 50, and  
valid for 366 days.

MT700 / MT705 - Irrevogável, Transferível, Divisível,  
Confirmado por um banco Top 50, e válido por 366 dias.

**TT** MT103 - Payment Against Shipping Documents (BL).

MT103 - Pagamento Contra Documentos de Embarque (BL).



# PROCEDURES

# PROCEDIMENTOS

1. The Buyer send the ICPO;  
1. O Comprador envia a ICPO;
2. The seller responds within 3 days with the FCO, and the buyer returns it signed;  
2. O vendedor responde em até 3 dias com a FCO, e o comprador devolve assinada;
3. The Seller sends the Draft of the SPA (Purchase and Sale Agreement) within 5 (five) business days.  
3. O Vendedor envia a Minuta do SPA (Contrato de Compra e Venda) em até 5 (cinco) dias úteis.
4. Buyer reviews and makes necessary corrections to the draft SPA, then signs and stamps it and returns it to the seller. The Seller reviews and ships the finished SPA.  
4. O comprador revisa e faz as correções necessárias no rascunho do SPA e, em seguida, o assina e carimba, devolvendo ao vendedor. O Vendedor analisa e envia o SPA finalizado.
5. Once the final contract has agreed by both parties, the seller will verify and if accepted, will sign the final contract and return it to the buyer, both parties register the signed contract with their respective banks. The exchange of the contract with the buyer will be carried out by electronic transmission. The seller also sends the proforma invoice (PI).  
5. Uma vez acordado o contrato final por ambas as partes, o vendedor irá verificar e se for aceite, assinará o contrato final e devolvê-lo-á ao comprador, ambas as partes registrarão o contrato assinado nos seus respectivos bancos. A troca do contrato com o comprador será efetuada por transmissão eletrônica. O vendedor também envia a fatura Proforma Invoice (PI).
6. Within 5 to 7 calendar days from the signature of the contract, buyer's bank sends irrevocable, confirmed, assignable, cash backed and operative bank guarantee and 100% payable via MT 103, thru swift mt 799/760 and RWA first.  
6. Dentro de 5 a 7 dias corridos a partir da assinatura do contrato, o banco do comprador envia uma garantia bancária irrevogável, confirmada, transferível, garantida em dinheiro e operativa e 100% pagável via MT 103, através do Swift MT 799/760 e RWA primeiro.
7. Within 5 to 7 calendar days of confirmation of bank guarantee by seller's bank, seller issue 2% performance bond to buyer's bank.  
7. Dentro de 5 a 7 dias corridos após a confirmação da garantia bancária pelo banco do vendedor, o vendedor emite um seguro-garantia de 2% ao banco do comprador.
8. Within 30 to 45 days after successful authentication and verification of the bank guarantee delivered via MT799/760, begin shipping according to contract.  
8. Dentro de 30 a 45 dias após a autenticação e verificação bem-sucedida da garantia bancária entregue via MT799/760, inicie o envio de acordo com o contrato.
9. All parties involved (commissioned), sign the already formalized NCNDA ICC, so that the seller, also being in agreement, can also sign.  
9. Todas as partes envolvidas (comissionados), assinam o NCNDA ICC já formalizado, para que o vendedor também estando de acordo, também possa assinar;
10. At the time of determining the contract for charter, Seller shall provide delivery details to Buyer. Seller will also provide vessel arrival and all other pertinent matters, if applicable. The buyer is invited to be present at the loading of the vessel, at the port of origin.



**10.** No momento da determinação do contrato de afretamento, o Vendedor fornecerá detalhes de entrega ao Comprador. O Vendedor também fornecerá a chegada da embarcação e todos os outros assuntos pertinentes, se aplicável. O comprador é convidado a estar presente no carregamento da embarcação, no porto de origem.

**11.** All subsequent shipments will follow the same procedure, if applicable.

**11.** Todas as remessas subsequentes seguirão o mesmo procedimento, se aplicável.

**12.** Seller will provide scanned copies of all shipping documentation to Buyer. All parties must deliver the documents to their respective banks. The seller will receive payment from the bank via MT103 as per the bank's schedule.

**12.** O vendedor fornecerá cópias digitalizadas de toda a documentação de remessa ao comprador. Todas as partes devem entregar os documentos aos seus respectivos bancos. O vendedor receberá o pagamento do banco via MT103 de acordo com o cronograma do banco.

**NOTE:** We only work with top banks 50. If in doubt, please contact us:

**OBS:** Apenas trabalhamos com top banks 50. Em caso de dúvida consulte:

<https://risk.lexisnexis.com/global/en/insights-resources/article/bank-rankings-top-banks-in-the-world>

## DOCUMENTS TO BE SEND TO BUYER:

## DOCUMENTOS A SEREM ENVIADOS AO COMPRADOR:

A. Bill of Lading, three (3/3) copies.

A. Conhecimento de Embarque, três (3/3) cópias.

B. Commercial Invoice, three (3/3) copies.

B. Fatura Comercial, três (3/3) vias.

C. Certificate of Origin, three (3/3) copies.

C. Certificado de Origem, três (3/3) vias.

D. Certificate of Quality and Quantity Issued by SGS or CCIC, three (3/3) copies.

D. Certificado de Qualidade e Quantidade Emitido pela SGS ou CCIC, três (3/3) cópias.

E. Phytosanitary Certificate, three (3/3) copies.

E. Certificado Fitossanitário, três (3/3) cópias.

F. Insurance Original, three (3/3) copies.

F. Original do seguro, três (3/3) cópias.

**INSPECTION:** SGS, CCIC or similar Certificate of Quality, Quantity and Weight at Port of Loading at Seller's Cost.

**INSPEÇÃO:** Certificado SGS, CCIC ou similar de Qualidade, Quantidade e Peso no Porto de Carregamento por conta do vendedor.

**PRICES:** Prices are subject to vary accordingly to market fluctuations. The price will be blocked after signing the FCO + SPA by the parties involved, the Seller and the Buyer.

**PREÇOS:** Os preços estão sujeitos a variações de acordo com as flutuações do mercado. O preço será bloqueado após a assinatura do FCO + SPA pelas partes envolvidas, o Vendedor e o Comprador.

# SCO

Soft Corporate Offer

## CERTIFICATIONS:



**ACSIQ®**  
Association



**GACC®**  
Association



fazcomex



**Siscomex**  
Sistema Integrado  
de Comércio Exterior



**MAPA** Ministério da  
Agricultura, Pecuária  
e Abastecimento



## DATE FOR ICPO

### Ask us.

VIA:

ATT:

