

COMMODITIES

EXPORT REFERENCE PRICES

BRAZIL - ASWP

August
2025



The background of the entire image is a close-up photograph of several bamboo stalks. The stalks are vertical, showing their characteristic segmented structure with green nodes and yellowish-brown internodes. The lighting is natural, highlighting the texture of the bamboo bark.

SCO

Soft Corporate Offer

SUGAR

IC45 / IC150 / IC600-1200

IC 45

Refined White Sugar



METRIC TONS	SBLC FULL	SBLC (value 6 shipments)	DLC FULL or SBLC (value 3 shipments)	SPOT (payment TT 50% SPA / 50% BL)
12.500	\$455.00	\$465.00	\$470.00	\$520.00
25.000	\$450.00	\$460.00	\$465.00	
50.000	\$445.00	\$455.00	\$460.00	
100.000	\$440.00	\$450.00	\$455.00	
200.000	\$435.00	\$445.00	\$450.00	
300.000 or more	\$430.00	\$440.00	\$445.00	
Commission for the Purchasing Group / Intermediaries	\$5.00/MT	\$3.00/MT	\$2.50/MT	\$2.50/MT

ICUMSA 45 IN CONTAINER (Quantities below 12,500MT)	FAS	FOB	CIF
	\$580.00	\$680.00	\$780.00
	\$5.00/MT commission for purchasing group and intermediaries		

Origin: Brazil

Packaging: Bulk in 50 kg. bags or 1,000 kg.

Specifications

- Icumsa: 45 RBU
- Humidity: 0.04% Max.
- Ash content: 0.04% Max.
- Polarization: 99.80% Min.
- Solubility: 100% Free Flow
- Radiation: Normal Certificate
- Color: Sparkling White
- Granulation: Fine

IC 150

Crystal Sugar



METRIC TONS	SBLC FULL	SBLC (value 6 shipments)	DLC FULL or SBLC (value 3 shipments)	SPOT (payment TT 50% SPA / 50% BL)
12.500	\$455.00	\$465.00	\$470.00	\$520.00
25.000	\$450.00	\$460.00	\$465.00	
50.000	\$445.00	\$455.00	\$460.00	
100.000	\$440.00	\$450.00	\$455.00	
200.000	\$435.00	\$445.00	\$450.00	
300.000 or more	\$430.00	\$440.00	\$445.00	
Commission for the Purchasing Group / Intermediaries	\$5.00/MT	\$3.00/MT	\$2.50/MT	\$2.50/MT

ICUMSA 150 IN CONTAINER (Quantities below 12,500MT)	FAS	FOB	CIF
	\$580.00	\$680.00	\$780.00
	\$5.00/MT commission for purchasing group and intermediaries		

Origin: Brazil

Packaging: Bulk in 50 kg. bags or 1,000 kg.

Specifications

- Icumsa: 150 RBU
- Humidity: 0.10% Max.
- Ash content: 0.10% Max.
- Polarization: 99.50% Min.
- Solubility: 100% Free Flow
- Radiation: Normal Certificate
- Color: Sparkling White
- Granulation: Fine

IC 600-1200

Raw Brown Sugar (VHP)



METRIC TONS	SBLC FULL	SBLC (value 6 shipments)	DLC FULL or SBLC (value 3 shipments)	SPOT (payment TT 50% SPA/ 50% BL)
12.500	\$560.00	\$570.00	\$580.00	\$610.00
25.000				
50.000				
100.000				
200.000				
300.000 or more				
Commission for the Purchasing Group / Intermediaries	\$5.00/MT	\$3.00/MT	\$2.50/MT	\$2.50/MT

ICUMSA 600-1200 IN CONTAINER (Quantities below 12,500MT)	FAS	FOB	CIF
	\$610.00	\$650.00	\$780.00
	\$5.00/MT Commission for Purchasing Group and Intermediaries		

Origin: Brazil

Packaging: Bulk in 50 kg. bags or 1,000 kg.

Specifications

- Icumsa: 600-1200 RBU
- Humidity: 0.15% Max.
- Ash content: 0.15% Max.
- Polarization: 99.20% Min.
- Solubility: 95% Free Flow
- Radiation: Normal Certificate
- Color: Brown
- Granulation: Fine



SCO

Soft Corporate Offer

SOYBEAN

GMO / NON-GMO

GMO

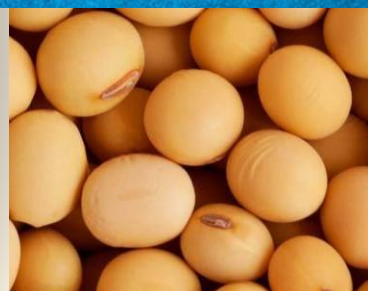
Transgenic



METRIC TONS	SBLC FULL	DLC FULL or SBLC (value 3 shipments)	SPOT (payment TT 50% SPA / 50% BL)
Any Quantity	\$530.00	\$560.00	\$590.00
Commission for the Purchasing Group / Intermediaries	\$5.00/MT	\$5.00/MT	\$2.50/MT

NON-GMO

Non - Transgenic



METRIC TONS	SBLC FULL	DLC FULL or SBLC (value 3 shipments)	SPOT (payment TT 50% SPA / 50% BL)
Any Quantity	\$620.00	\$660.00	\$690.00
Commission for the Purchasing Group / Intermediaries	\$5.00/MT	\$5.00/MT	\$2.50/MT

Origin: Brazil

Origin: Brazil

Packaging: Bulk in 60 kg.

Packaging: Bulk in 60 kg.

Specifications

- Grade: #2 GMO
- Type: suitable for human consumption
- Quality: standard export quality
- Test Weight: 54 pounds per bushel min
- Minimum Protein: 34%
- Moisture Content: max. 13.5%
- Foreign Material: max. 2.00%
- Oil Content: min. 18.5%
- Total Damage: 4%
- kernels: 3% max.
- Free Fatty Acids: 1% max.
- Discolored Seeds: 2% maximum

Specifications

- Grade: #2 NON-GMO
- Type: suitable for human consumption
- Humidity: 13.5% maximum
- Max Splits: 20%
- Protein: 35% base, 34% minimum
- Max Color: 2%
- Oil Content: 18.5% base, 18.0% min.
- Test Weight: 54 pounds/ minute/ bushel
- Totally Damaged Grains: 3% max.
- Foreign Matter: 2% maximum
- Radiation: normal
- Heat Damaged Grains: 0.50% max.

SCO

Soft Corporate Offer

CORN

GMO/ NON-GMO



GMO

Transgenic



METRIC TONS	SBLC FULL	DLC FULL or SBLC (value 3 shipments)	SPOT (payment TT 50% SPA / 50% BL)
Any Quantity	\$345.00	\$370.00	\$390.00
Commission for the Purchasing Group / Intermediaries	\$5.00/MT	\$5.00/MT	\$2.50/MT

NON-GMO

Non - Transgenic



METRIC TONS	SBLC FULL	DLC FULL or SBLC (value 3 shipments)	SPOT (payment TT 50% SPA / 50% BL)
Any Quantity	\$360.00	\$380.00	\$390.00
Commission for the Purchasing Group / Intermediaries	\$5.00/MT	\$5.00/MT	\$2.50/MT

Origin: Brazil
Packaging: Bulk in 60 kg.

Specifications

- Grade: #2 GMO
- Test weight: min. 70
- Humidity: max. 14%
- Important Matters: max. 1.5%.
- Broken Core: max. 3%
- Total Damage: max. 3%
- Aflatoxin: max. 20 ppb
- Protein: min. 8%
- Fat: min. 3%
- Fiber: max. 2.7%
- Total Ash: max. 1.5%
- T.V.N.: max. 50
- Toxic Grains: max. 2 – 3 (seeds out of 100)
- E. COLI: max. 0
- Mold: max. 5 x 10⁵
- Salmonella: max. 0

Origin: Brazil
Packaging: Bulk in 60 kg.

Specifications

- Grade: #2 NON-GMO
- Humidity: 14.5% max.
- Foreign matter: 3% max.
- Broken kernels: 4% max
- Aflatoxin does not exceed: 20 PPM max.
- Protein: 8% Min.
- Fat: 3.5%
- Fiber: 2.7% max.
- Bulk density: 60-70 Hl. Min.
- Weevil Damage Kernel: 3% Max
- Chemico Seed: 2 seeds in 100gr. max.
- Gray: 1.5% max.
- TVN: 50 mg/100 max.
- Toxic grains: 2-3/100g max.

SCO

Soft Corporate Offer

WHEAT

IN GRAINS



WHEAT GRAINS



METRIC TONS	SBLC FULL	DLC FULL or SBLC (value 3 shipments)	SPOT (payment TT 50% SPA / 50% BL)
Any Quantity	\$530.00	\$560.00	\$610.00
Commission for the Purchasing Group / Intermediaries	\$5.00/MT	\$5.00/MT	\$5.00/MT

WHEAT GRAINS

Origin: Brazil

Packaging: Bulk in 50 kg.

Specifications

- Moisture: 14% max.
- Protein content: 11,5% min. (N x 5.7 in dry matter)
- Hagberg falling number: 220 min.
- Zeleny index: 25 min.
- Specific weight: 74kg/hl min.
- Aflatoxin total: 4 microgram/kg max.
- Ochratoxin: 5 microgram/kg max.
- Deoxynivalenol (Vomitoxin): 1250 microgram/kg max.
- Presence of Datura seeds and other toxic seeds or traces of tropane alkaloids: Nil
- Matter which is not basic cereal of unimpaired quality: 10%
- Broken grains: Max. 3% grain pieces or grains passing through a sieve with a circular mesh 2.5 mm in diameter
- Grain impurities: Max. 5% (shriveled grains, grains of other cereals, grains damaged by pests, grains in which the germ is discolored, and grains overheated during drying)
- Sprouted grains: 2.5% max.
- Miscellaneous impurities: Max. 1% (weed seeds, damaged grains, extraneous matter, husks, decayed grains, dead insects and insect fragments)
- Ergot: 0.05% max.
- Toxic or harmful grains: 0.1% max.

SCO

Corporate Office

FLOUR & MEAL

CORN / SOY / WHEAT



CORN



TYPE	METRIC TONS	SBLC FULL	DLC FULL or SBLC (value 3 shipments)	SPOT (payment TT 50% SPA / 50% BL)
FLOUR	Any Quantity	\$650.00	\$680.00	\$710.00
MEAL		\$450.00	\$480.00	\$510.00

SOY



TYPE	METRIC TONS	SBLC FULL	DLC FULL or SBLC (value 3 shipments)	SPOT (payment TT 50% SPA / 50% BL)
FLOUR	Any Quantity	TBA	TBA	TBA
MEAL		\$810.00	\$850.00	\$890.00

WHEAT



TYPE	METRIC TONS	SBLC FULL	DLC FULL or SBLC (value 3 shipments)	SPOT (payment TT 50% SPA / 50% BL)
FLOUR	Any Quantity	\$910.00	\$950.00	\$990.00
MEAL		\$710.00	\$750.00	\$790.00

SCO

Soft Corporate Offer

COFFEE

ARABICA / ROBUSTA



ARABICA

Roasted



METRIC TONS	SBLC FULL	DLC FULL or SBLC (value 3 shipments)	SPOT (payment TT 50% SPA / 50% BL)
Any Quantity	\$5,375.00	\$5,420.00	\$5,690.00
Commission for the Purchasing Group / Intermediaries	\$5.00/MT	\$5.00/MT	\$5.00/MT

ROBUSTA

Canephora



METRIC TONS	SBLC FULL	DLC FULL or SBLC (value 3 shipments)	SPOT (payment TT 50% SPA / 50% BL)
Any Quantity	\$5,245.00	\$5,350.00	\$5,670.00
Commission for the Purchasing Group / Intermediaries	\$5.00/MT	\$5.00/MT	\$5.00/MT

ARABICA

Origin: Brazil

Packaging: Bulk in 60 kg.

Specifications

- Caffeine: 0.8-1.4%
- Type: 6
- Sugar Content: 6-9%
- Essential oil content: 15-17%
- Humidity: 13% Max.
- Mixture: 1% Max.
- Broken grains: 5% Max.
- Black grains: 5% Max.
- Screen 13: 90% Min.

ROBUSTA

Origin: Brazil

Packaging: Bulk in 60 kg.

Specifications

- Caffeine: 1.7-4%
- Type: 8
- Sugar Content: 3-7%
- Essential oil content: 10-12%
- Humidity: 13% Max.
- Mixture: 0.5% Max.
- Broken grains: 5% Max.
- Black grains: 5% Max.
- Screen 13: 90% Min.

SCO

Soft Corporate Offer

SORGHUM

RED



SORGHUM RED



METRIC TONS	SBLC FULL	DLC FULL or SBLC (value 3 shipments)	SPOT (payment TT 50% SPA / 50% BL)
Any Quantity	\$450.00	\$480.00	\$530.00
Commission for the Purchasing Group / Intermediaries	\$5.00/MT	\$5.00/MT	\$5.00/MT

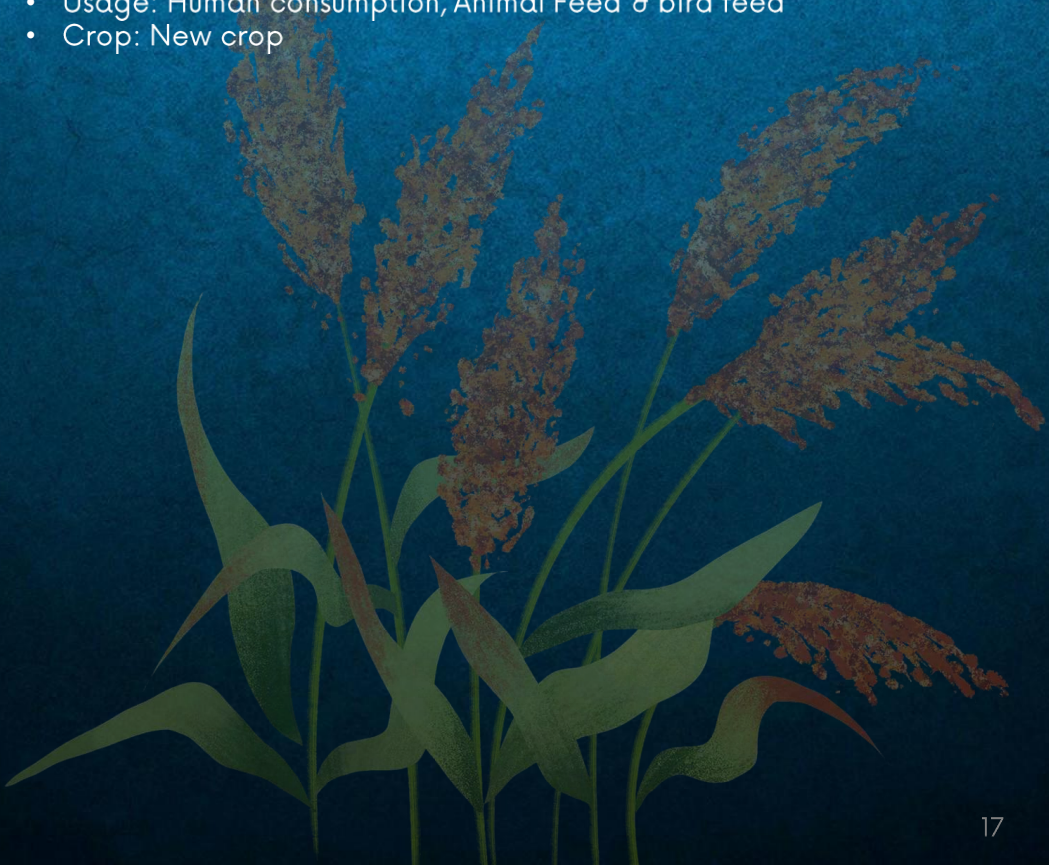
SORGHUM RED

Origin: Brazil

Packaging: Bulk in 50 kg.

Specifications

- Moisture: 14% Max.
- Purity: 99% Min.
- Insects: No insects dead or alive, vermin or excrement
- Appearance: White, Red
- Usage: Human consumption, Animal Feed & bird feed
- Crop: New crop





SCO

Soft Corporate Offer

RICE

WHITE / PARBOLIZED

WHITE

5% Broken



METRIC TONS	SBLC FULL	DLC FULL or SBLC (value 3 shipments)	SPOT (payment TT 50% SPA / 50% BL)
Any Quantity	\$720.00	\$750.00	\$790.00
Commission for the Purchasing Group / Intermediaries	\$5.00/MT	\$5.00/MT	\$5.00/MT

PARBOLIZED

Type 1



METRIC TONS	SBLC FULL	DLC FULL or SBLC (value 3 shipments)	SPOT (payment TT 50% SPA / 50% BL)
Any Quantity	\$850.00	\$880.00	\$910.00
Commission for the Purchasing Group / Intermediaries	\$5.00/MT	\$5.00/MT	\$5.00/MT

WHITE 5% BROKEN

Origin: Brazil
Packaging: Bulk in 50 kg.

Specifications

- Type: 1
- 5% Broken Long Grain White Rice
- Breakage (% max): 5%
- Average humidity (% max): 14.5%
- Foreign substances (% max): 0.3%
- Damaged grains (% max): 1.0%
- Yellow grains (% max): 0.5%
- Calcareous grains (% max): 6%
- Grains with red stripes (% max): 2%
- Glutinous grains (% max): 1.5%
- Immature grains (% max): 0.2%
- Average whole grain length (min): 5.8-6.5 mm
- Rice with husk (max/1 kg): 8 grains
- Harvest year: Current
- Grinding degree: fine ground and double polished

PARBOLIZED TYPE 1

Origin: Brazil
Packaging: Bulk in 50 kg.

Specifications

- Type: 1
- Breakage (% max): 5%
- Foreign substances (% max): 0.1%
- Damaged grains (% max): 0.5%
- Whole grains (% min): 85%
- Shelled grains (max/ 1 kg): 1 grain
- Average humidity (% max): 14.5%
- Average whole grain length (min/mm): 6.2mm
- Termites and Insects: None
- Harvest year: Current
- Grinding degree: Finely ground and double polished

The background of the entire image is a dense, close-up photograph of various beans. Some beans are bright green, while others are a pale yellow or cream color. They are scattered and overlapping, creating a textured, natural-looking background.

SCO

Soft Corporate Offer

BEAN

BROWN / BLACK / WHITE

BROWN

Carioca



METRIC TONS	SBLC FULL	DLC FULL or SBLC (value 3 shipments)	SPOT (payment TT 50% SPA / 50% BL)
Any Quantity	\$2,210.00	\$2,250.00	\$2,290.00
Commission for the Purchasing Group / Intermediaries	\$5.00/MT	\$5.00/MT	\$5.00/MT

BLACK

Phaseolus Vulgaris L.



METRIC TONS	SBLC FULL	DLC FULL or SBLC (value 3 shipments)	SPOT (payment TT 50% SPA / 50% BL)
Any Quantity	\$1,980.00	\$2,010.00	\$2,050.00
Commission for the Purchasing Group / Intermediaries	\$5.00/MT	\$5.00/MT	\$5.00/MT

WHITE

Cannellini



METRIC TONS	SBLC FULL	DLC FULL or SBLC (value 3 shipments)	SPOT (payment TT 50% SPA / 50% BL)
Any Quantity	\$2,010.00	\$2,150.00	\$2,190.00
Commission for the Purchasing Group / Intermediaries	\$5.00/MT	\$5.00/MT	\$5.00/MT

A close-up photograph of a clear glass pitcher pouring a golden-yellow liquid, likely cooking oil, into a matching glass bowl. The liquid is captured mid-pour, creating a dynamic stream and ripples on the surface of the oil already in the bowl. The background is a rustic wooden surface, and the lighting is warm, highlighting the viscosity and color of the oil.

OIL

CORN / CANOLA /
SOYBEAN / SUNFLOWER

CORN

Degummed Oil Flex Tank



METRIC TONS	SBLC FULL	DLC FULL or SBLC (value 3 shipments)	SPOT (payment TT 50% SPA / 50% BL)
Any Quantity	TBA ACCORDING TO QUANTITY OR PACKAGING		
Commission for the Purchasing Group / Intermediaries	\$5.00/MT	\$5.00/MT	\$5.00/MT

CANOLA

Degummed Oil Flex Tank



METRIC TONS	SBLC FULL	DLC FULL or SBLC (value 3 shipments)	SPOT (payment TT 50% SPA / 50% BL)
Any Quantity	TBA ACCORDING TO QUANTITY OR PACKAGING		
Commission for the Purchasing Group / Intermediaries	\$5.00/MT	\$5.00/MT	\$5.00/MT

CORN DEGUMMED OIL

Origin: Brazil

Packaging:

200-liter metal drums = 180 kg
54-liter plastic drums = 48 kg
18-liter metal cans = 16 kg

Specifications

- Maximum moisture content of 12.5%
- Minimum protein content of 46.0%
- Maximum residual fat content of 2.5%
- Maximum fiber content of 6.0%
- Ash content maximum 6.0%
- Acidity index ≤ 0.20
- Peroxide value ≤ 2.5

CANOLA DEGUMMED OIL

Origin: Brazil

Packaging:

200-liter metal drums = 180 kg
54-liter plastic drums = 48 kg
18-liter metal cans = 16 kg

Specifications

- Maximum moisture content of 12.5%
- Minimum protein content of 46.0%
- Maximum residual fat content of 2.5%
- Maximum fiber content of 6.0%
- Maximum ash content of 6.0%
- Specific weight (20°C) between 0.914 and 0.920 g/cm³
- Iodine between 110 and 126 g I₂/100g
- Saponification between 182 and 193 mg KOH/g
- Unsaponifiable matter less than or equal to 2.0%

SOYBEAN

Degummed Oil Flex Tank



METRIC TONS	SBLC FULL	DLC FULL or SBLC (value 3 shipments)	SPOT (payment TT 50% SPA / 50% BL)
Any Quantity	TBA ACCORDING TO QUANTITY OR PACKAGING		
Commission for the Purchasing Group / Intermediaries	\$5.00/MT	\$5.00/MT	\$5.00/MT

SUNFLOWER

Degummed Oil Flex Tank



METRIC TONS	SBLC FULL	DLC FULL or SBLC (value 3 shipments)	SPOT (payment TT 50% SPA / 50% BL)
Any Quantity	TBA ACCORDING TO QUANTITY OR PACKAGING		
Commission for the Purchasing Group / Intermediaries	\$5.00/MT	\$5.00/MT	\$5.00/MT

SOYBEAN DEGUMMED OIL

Origin: Brazil

Packaging:

200-liter metal drums = 180 kg
54-liter plastic drums = 48 kg
18-liter metal cans = 16 kg

Specifications

- Moisture (Maximum): 2.0 g/kg
- Ethereal Extract (Minimum): 960.0 g/Kg
- Unsaponifiable Matter (Maximum): 15.0 g/kg
- Oleic Acidity (Maximum): 1.5 mg KOH/g
- Peroxide Index (Maximum): 15 meq O₂/1000g

SUNFLOWER DEGUMMED OIL

Origin: Brazil

Packaging:

200-liter metal drums = 180 kg
54-liter plastic drums = 48 kg
18-liter metal cans = 16 kg

Specifications

- Relative density at 20°C: $\geq 0.914 \leq 0.916$
- Refractive index at 40°C: $\geq 1.461 \leq 1.471$
- Saponification index: $\geq 190 \leq 191$ mg
- KOH/glodine index: $\geq 94 \leq 122$ Wijs

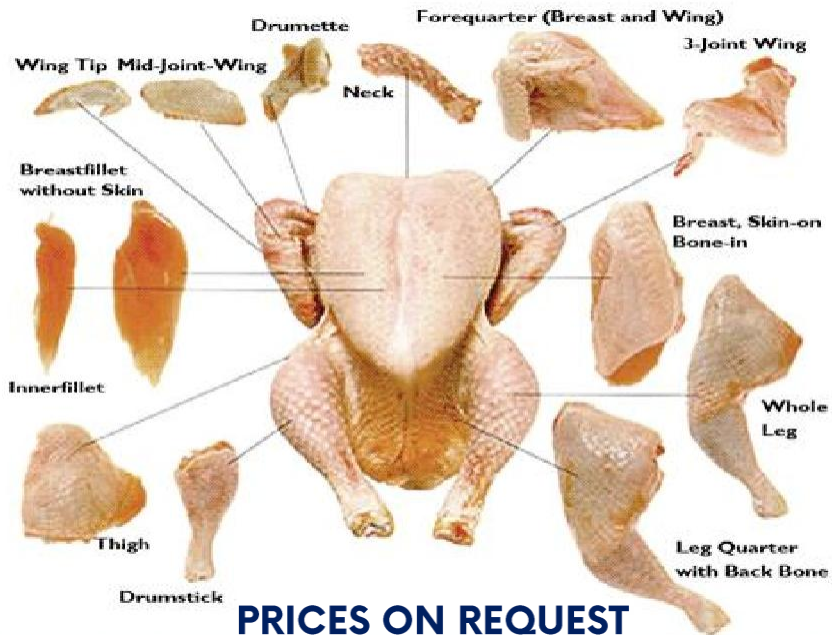
MEATS

CHICKEN / BEEF / PORK /
LAMB



CHICKEN

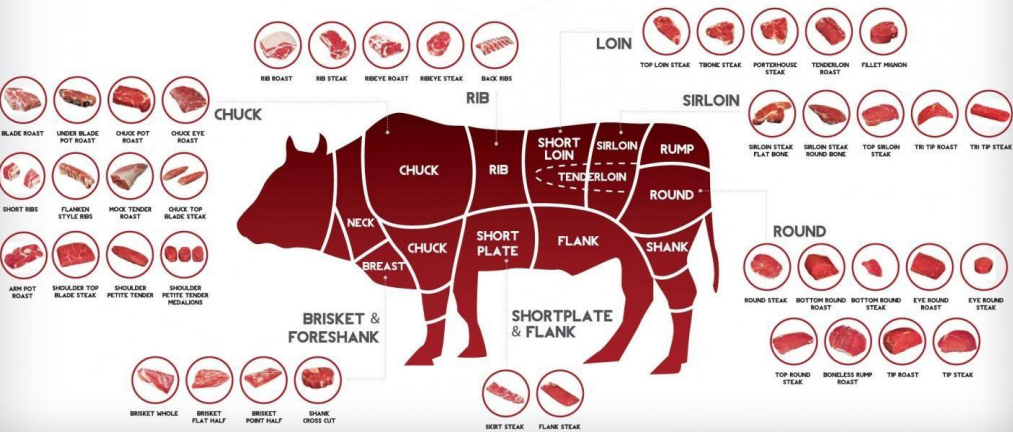
Frozen Cuts



PRICES ON REQUEST

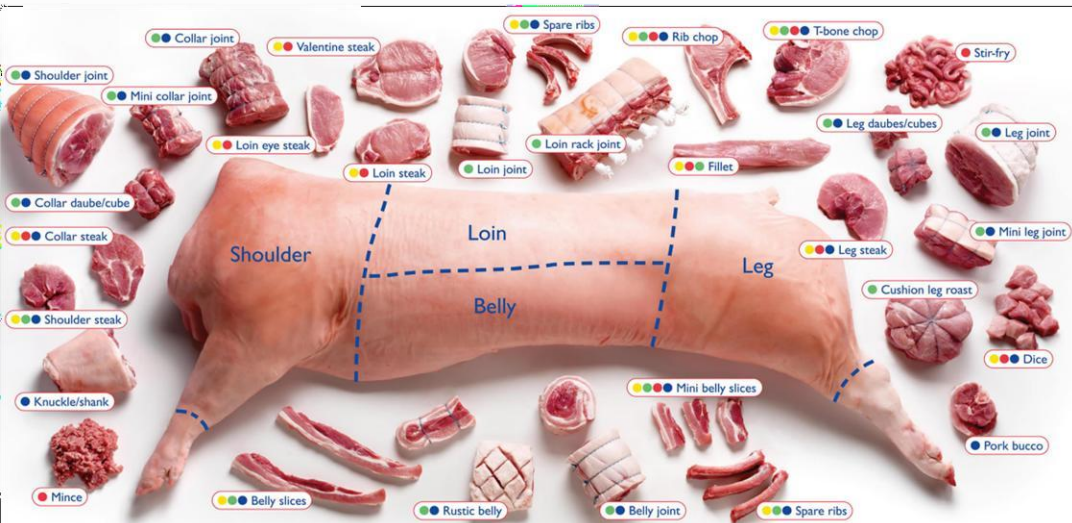
BEEF

Frozen Cuts

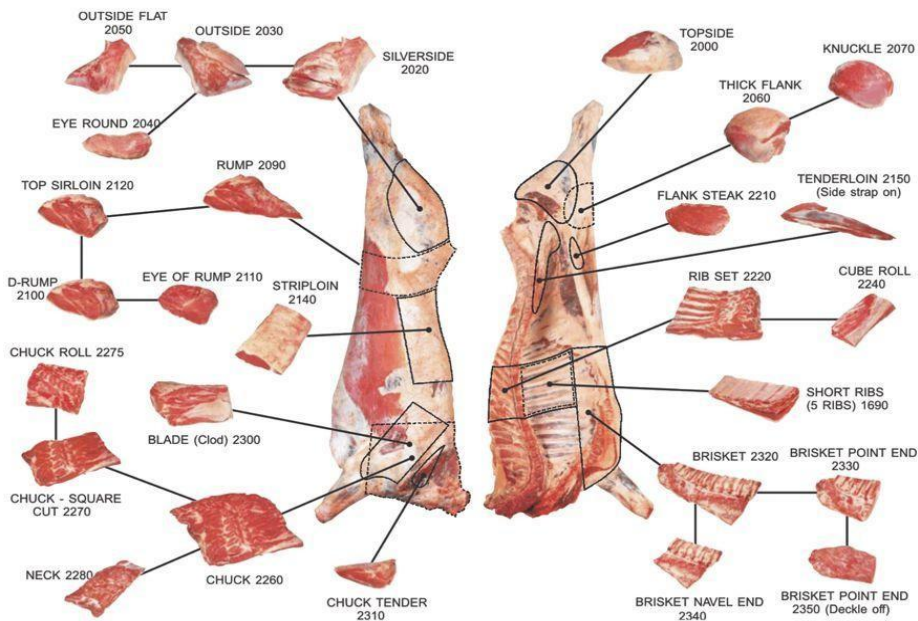


PRICES ON REQUEST

Frozen Cuts

**PRICES ON REQUEST**

Frozen Cuts



2310
PRICES ON REQUEST

SCO

Soft Corporate Offer

LIVE CATTLE

ANGUS / NELORE



ANGUS



QUANTITY	SBLC FULL	SBLC (value 3 shipments)
Minimum 5,000 heads	PRICES ON REQUEST	
Commission for the Purchasing Group / Intermediaries	\$50.00/MT	

ANGUS beef is known for its quality, with a high degree of marbling, which makes it softer and tastier. In 2022, Brazil exported 1,88 thousand tons of Angus beef, the highest volume ever recorded. In 2023, the total volume exported reached 2,800 tons, an increase of 68% on the previous year.

NELORE



QUANTITY	SBLC FULL	SBLC (value 3 shipments)
Minimum 5,000 heads	PRICES ON REQUEST	
Commission for the Purchasing Group / Intermediaries	\$50.00/MT	

NELORE is the most predominant breed in Brazil, representing around 80% of the national herd. The Nelore originated in India and is well adapted to Brazilian climatic conditions, especially in warmer regions.

DAIRY COW



QUANTITY	SBLC FULL	SBLC (value 3 shipments)
Minimum 5,000 heads	PRICES ON REQUEST	
Commission for the Purchasing Group / Intermediaries	\$50.00/MT	

The market for **DAIRY COWS** plays a key role in the dairy industry, providing the main ingredient for the production of milk and dairy products. The most common cows to invest in dairy cattle here in Brazil are:

1. Holstein
2. Girolando
3. Brown Swiss
4. Jersey
5. Zebu

Dairy The three most common zebu breeds are: Guzerá, Sindi, Gir.

LAMB



QUANTITY	SBLC FULL	SBLC (value 3 shipments)
Minimum 5,000 heads	PRICES ON REQUEST	
Commission for the Purchasing Group / Intermediaries	\$50.00/MT	

LAMB meat is considered noble and has a high value on the market due to the scarcity of standardized cuts. To guarantee the quality of the meat, producers must buy good dams and breeding stock and standardize the quality from the start. Lambs can be marketed in groups of producers, which allows them to create strategies to increase the value of the final product.

PAYMENT TERMS

TERMOS DE PAGAMENTO

**SBLC
or LC** MT799 / MT760 – Irrevocable, Transferable,
Divisible, Confirmed by a Top bank 50, and valid
for 366 days.

MT799 / MT760 – Irrevogável, Transferível, Divisível,
Confirmado por um banco Top 50, e válido por 366 dias.

DLC MT700 / MT705 – Irrevocable, Transferable,
Divisible, Confirmed by a Top bank 50, and
valid for 366 days.

MT700 / MT705 – Irrevogável, Transferível, Divisível,
Confirmado por um banco Top 50, e válido por 366 dias.

TT MT103 – Payment Against Shipping Documents (BL).

MT103 – Pagamento Contra Documentos de Embarque (BL).



SCO

Soft Corporate Offer

Ask us about the procedure and more details

CERTIFICATIONS:



AQSIQ®
Association



GACC®
Association



fazcomex



Siscomex
Sistema Integrado
de Comércio Exterior



MAPA Ministério da
Agricultura, Pecuária
e Abastecimento

